

ITEM REFERENCE: 200-0018 / 200-0019 / 200-0021 (SAME KEY)

COMMERCIAL NAME: 3 LEGS MANUAL PARKING BARRIER WITH KEYLOCK

OPTIONS:

200-0018: Standard model

200-0019: Model with central bumper spring

200-0021: Model with same key

KIT CONTENTS:

- 1 Barrier
- 6 Security bolts+6 Plugs
- 1 "U" seal
- 1 Instructions manual
- 1 Lock with 3 keys
- 2 Reflective strips

DIMENSIONS AND WEIGHT:

Barrier up: Length 400 x Width 850 x Height 455 mm

Barrier down: Length 785 x Width 850 x Height 110 mm

Tube diameter: 50 mm

Metal thickness: 2 mm

Weight: 17 Kg.

DESCRIPTION:

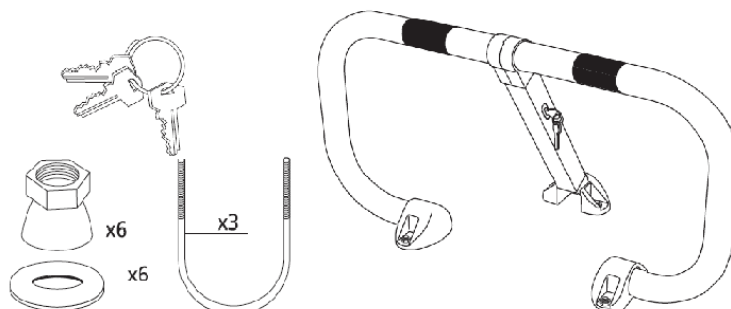
Tough and strong parking barrier, with 3 fixing legs fixed to the ground with 2 bolts each or with "U" seal (6bolts or 3 "U" to fasten, in total). Locking that needs to be activated when pulling up as putting the barrier down. The steel galvanized tube has a 50 mm diameter and 2 mm thickness which makes it very resistant, helping anyone who wants to have his parking space and car protected and safe. It comes with 2 red reflective strips.



BARRIER RESERVE PARKING SPACE: 200-0018

KIT CONTENTS

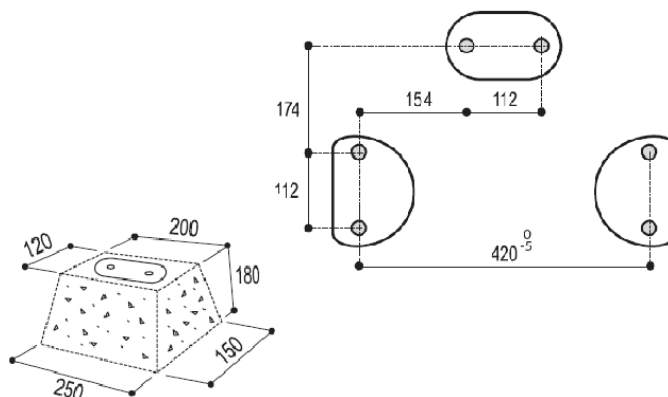
- 1 Barrier APCA1
- 3 Keys
- 3 « U » locks
- 6 Nuts
- 6 Rings
- 2 Reflective strips



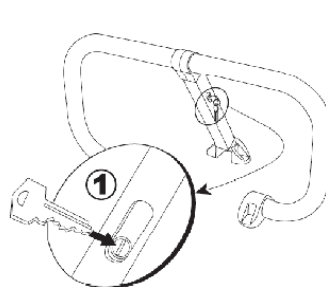
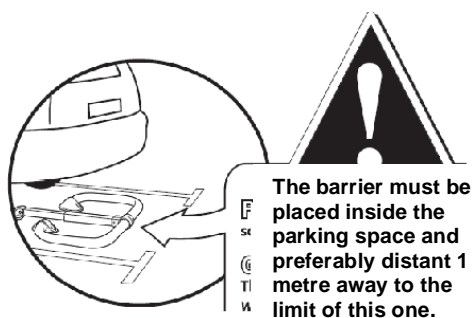
INSTALLATION INSTRUCTIONS

-Fit the « U » into the ground with the ends, up, leaving on the surface enough screw to fix the barrier et screw the nuts.

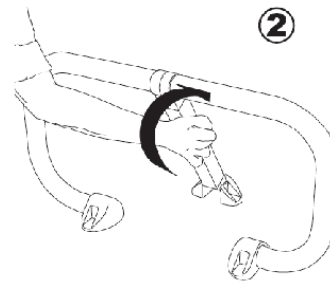
- Fix the barrier with the security screws and push up to break the wings.



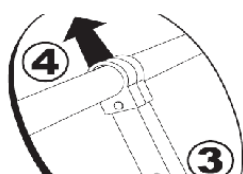
USER MANUAL



1 Insert the key



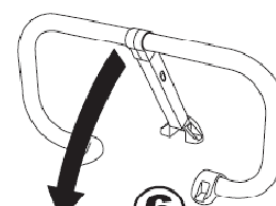
2 Turn the key clockwise up to the end



3 Don't leave the key.
4 The bow gets up to the end over the key



5 Practice a light pressure over the bow and take the key off



6 Drop down the bow until touching the ground